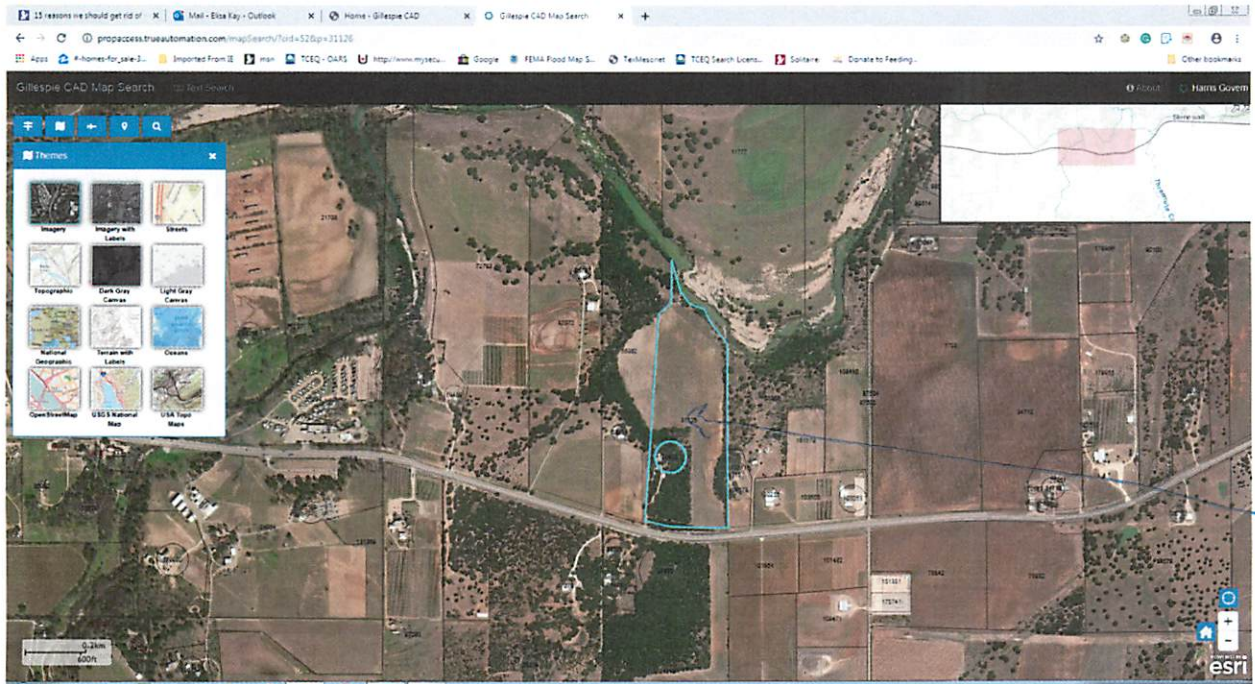


11382 E US Highway 290





APPROXIMATE SCALE IN FEET



NATIONAL FLOOD INSURANCE PROGRAM

FIRM
FLOOD INSURANCE RATE MAP
GILLESPIE COUNTY,
TEXAS AND
INCORPORATED AREAS

PANEL 477 OF 525

(SEE MAP INDEX FOR PANELS NOT PRINTED)

CONTAINS
COMMUNITY

NUMBER PANEL SUFFIX

GILLESPIE COUNTY
UNINCORPORATED AREAS

480386 0077 C

MAP NUMBER
48171C0477 C

EFFECTIVE DATE:
OCTOBER 19, 2001



Federal Emergency Management Agency

JOINS PANEL 0500

This is an official copy of a portion of the above referenced flood map. It was extracted using F-MIT On-Line. This map does not reflect changes or amendments which may have been made subsequent to the date on the title block. For the latest product information about National Flood Insurance Program flood maps check the FEMA Flood Map Store at www.msc.fema.gov

